

Air  
Soil  
Water

# The EMPIRICAL Company

## Industrial Hygiene Consulting

### Mold Investigations

#### SERVICES WE OFFER:

- Asbestos Surveys & Abatement Design and Oversight
- Mold Investigation
- Mold Remediation Design and Oversight
- Indoor Air Quality Issues
- Lead Surveys & Remediation Design and Oversight
- Environmental Site Assessments & Remediation Design and Oversight
- UST Decontamination Plans & Oversight
- Noise Surveys
- Confined Space Monitoring
- Legal Consulting Services
- Training Courses

#### ABOUT US

The Empirical Company is a woman owned small business incorporated in the State of Washington. The Empirical Company provides Asbestos Surveys and other Industrial Hygiene services nationwide

#### CONTACT US

For more information or to schedule a consultation, call us at (888) 735-1848 or visit us at [www.empirical-ih.com](http://www.empirical-ih.com).



Molds are a natural and important part of our environment. They are ubiquitous and are found virtually everywhere. Mold spores can be found in both indoor and outdoor air and surfaces. Mold can germinate and grow in conditions of at least 70% relative humidity or on a damp spot leading to adverse conditions. Indoor airborne mold spore levels that are significantly higher than outdoor air concentrations are usually indicative of infestations of interior furnishings or wall cavities.

While it is generally accepted that molds can be allergenic and can lead to adverse health conditions in susceptible people, a number of government authorities including the United States EPA, California Department of Health Services and New York City Department of Health have developed recommendations and guidelines for assessment and remediation of mold. Additionally, some basic interpretive information using certain assumptions and facts has been extracted from a number of peer reviewed texts, such as the American Conference of Governmental Industrial Hygienists (ACGIH).

#### OUR SURVEYS INCLUDE

- Detailed assessment of the facility utilizing state of the art equipment;
- Collection of surface and air samples to aid in identifying the genus makeup and count;
- A detailed report of our findings and recommendations;
- Develop a detailed remediation specification to aid the remediation and
- Contractor appointment and oversee the entire abatement procedure.

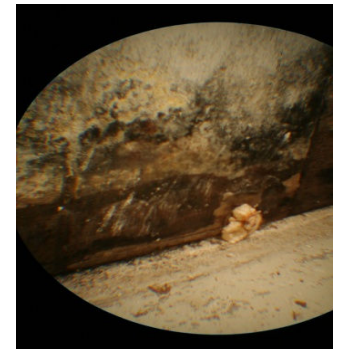


Photo of interior wall cavity taken with fiber optic borescope

7320 W. Hood Place, Suite 101  
Kennewick, Washington 99336  
Toll Free: 888-735-1848  
Phone: 509-735-1848  
Fax: 509-735-1859  
[www.empirical-ih.com](http://www.empirical-ih.com)

